

1	INVENTORY OVERVIEW	2
1.1	Delivery planning	5
1.2	Additional functions in Inventory Details	6
1.3	Configuration Time Bucket Profile	7
1.4	Due list and ASN	9
1.5	Inventory-Alerts	10

Mark **one** line in order to report the detailed stock level, requirements etc.

If you mark several line, you will receive data for all marked products in the table, the general product data will not be shown.

Inventory information

Maintain Location Product | Time Buckets Profile | Inventory Audit Trail | Inventory Monitor Settings

Supplier Product: | Stock on Hand: 3237 | ST | Last Demand Update: 05.10.2005 09:46:20
 Ship-to Location: 0001 | Kostal Automotiv | Unrestricted Stock /cons.: 0/3237 | Last stock update: 05.10.2005 09:46:17
 Product: 10400477691080-17 | cover | Stock in Quality Inspection /cons.: 0/0 | Last ASN update:
 Customer: 100000001 | KOSTAL-GROUP | Blocked Stock /cons.: 0/0
 Lead Time (Hours): | Minimum/Maximum Stock: 1167/16750 | ST

Grid | Graphic

Grid arrangement: Overview | Simulate | Save | Notes On | Date from: | Date to: | Planned Receipts Proposal

Key figure	Initial	06.10.2005	07.10.2005	08.10.2005	09.10.2005	10.10.2005	11.10.2005	12.10.2005	13.10.2005	14.10.2005	15.10.2005	16.10.2005	17.10.2005	18
Demand		809	809	809	809	3.000	3.000	4.500						
Planned Receipts														
In transit														
Projected stock	3.237	2.428	1.619	809	-3.000	-6.000	-10.500	-10.500	-10.500	-10.500	-10.500	-10.500	-10.500	-10.500
Minimum proposal				357	1.167	4.167	7.167	11.667	11.667	11.667	11.667	11.667	11.667	11.667
Maximum proposal	13.513	14.322	15.132	15.941	16.750	19.750	22.750	27.250	27.250	27.250	27.250	27.250	27.250	27.250
Days of Supply	4,0	3,0	2,0	1,0										
Minimum Stock	1.167	1.167	1.167	1.167	1.167	1.167	1.167	1.167	1.167	1.167	1.167	1.167	1.167	1.167
Maximum Stock	16.750	16.750	16.750	16.750	16.750	16.750	16.750	16.750	16.750	16.750	16.750	16.750	16.750	16.750

Color Legend: ■ No alert ■ Below Min. ■ Out of stock ■ Above Max.

You can learn from the **inventory details** a grid arrangement and a graphic. The graphic visualizes the temporal process of demand and the stock in a curve. The grid arrangement reports detailed demand and stock data to every period. You as a supplier organize the scheduling by using the grid arrangement.

In the following the single screen areas will be described:

Inventory data:

Stock on Hand: 3237 | ST
 Unrestricted Stock /cons.: 0/3237
 Stock in Quality Inspection /cons.: 0/0
 Blocked Stock /cons.: 0/0
 Minimum/Maximum Stock: 1167/16750 | ST

Inventory	Description
Stock on Hand	Stock available at customer The inventory comprehends the stocks, which considers the term for calculating of inventory projected. In the standard release it is only the free available unrestricted stock.
Unrestricted Stock	Stock free available at store at the customer at date of scheduling
Stock in Quality Inspection	Stock being examined at date of customer's scheduling

Blocked Stock	Stock at customer, which may not be used. You may not use this stock when calculating the stock projected.
Minimum and Maximum Stock	Minimum and maximum stock of a product stipulated by customer and supplier Minimum and maximum stock data base on the location product master data.

Last update:

Last Demand Update	05.10.2005 09:46:20
Last stock update	05.10.2005 09:46:17
Last ASN update	

These data fields for the last demand and stock update include the date when KOSTAL has actualized the dates last.

The "Last ASN update" contains the date when delivery advise date have been revised at last.

Product data projected:

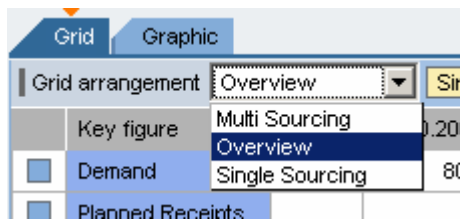
Key figure	Initial	06.10.2005	07.10.2005	08.10.2005	09.10.2005	10.10.2005	11.10.2005
Demand		809	809	809	809	3.000	3.000
Planned Receipts							
In transit							
Projected stock	3.237	2.428	1.619	809		-3.000	-3.000
Minimum proposal				357	1.167	4.167	4.167
Maximum proposal	13.513	14.322	15.132	15.941	16.750	19.750	20.560
Days of Supply	4,0	3,0	2,0	1,0			
Minimum Stock	1.167	1.167	1.167	1.167	1.167	1.167	1.167
Maximum Stock	16.750	16.750	16.750	16.750	16.750	16.750	16.750

Signification of lines:

- Demand:* Gross requirement per day. Demands of the past are summarized in the column "Initial"
- In transit:* Advised quantity (released ASN) to arrival date at customer
- Projected stock:* Stock (available + in quality inspection)
+ in transit
+ planned receipt
- demand
- Minimum proposal:* Proposed quantity to be delivered at this day in order not to fall short of minimum stock
- Maximum proposal:* Proposed quantity to be delivered at this day in order not exceed the maximum stock

- Days of Supply:* Number of days the projected stock covering the customers' requirements.
- Minimum Stock* Minimum Stock which – in case of shortfall – leads to Alerts and affects the supplier assessment negatively.
Which period of time?
- Maximum Stock:* Maximum Stock which – in case of exceeding – leads to Alerts

1.1 Delivery planning



Select Single Sourcing if planning is only for one supplier number resp. location.
A New line "Planned Receipts" will be created.

Enter the planned quantity to be delivered and "Simulate". The stock projected will be recalculated:

Key figure	Initial	06.10.2005	07.10.2005	08.10.2005	09.10.2005	10.10.2005	11.10.2005
Demand		809	809	809	809	3.000	3.000
Planned Receipts				1.000,000			
In transit							
Projected stock	3.237	2.428	1.619	1.809	1.000	-2.000	-5.000
Minimum proposal				357	167	3.167	6.167
Maximum proposal	13.513	14.322	15.132	15.941	15.750	18.750	21.750
Days of Supply	4,0	3,0	2,0	1,3	0,3		
Minimum Stock	1.167	1.167	1.167	1.167	1.167	1.167	1.167
Maximum Stock	16.750	16.750	16.750	16.750	16.750	16.750	16.750

Planned Receipts can be changed and simulated again:

Key figure	Initial	06.10.2005	07.10.2005	08.10.2005	09.10.2005	10.10.2005	11.10.2005	12.10.2005	13.10.2005
Demand		809	809	809	809	3.000	3.000	4.500	
Planned Receipts				15.000,000					
In transit									
Projected stock	3.237	2.428	1.619	15.809	15.000	12.000	9.000	4.500	4.500
Minimum proposal				357					
Maximum proposal	13.513	14.322	15.132	15.941	1.750	4.750	7.750	12.250	12.250
Days of Supply	4,0	3,0	2,0	16,5	15,5	14,5	13,5	12,5	1,5
Minimum Stock	1.167	1.167	1.167	1.167	1.167	1.167	1.167	1.167	1.167
Maximum Stock	16.750	16.750	16.750	16.750	16.750	16.750	16.750	16.750	16.750

As an alternative Planned Receipts can be calculated by the system. For that purpose enter the period of time to be planning in the fields "Date from" to "Date to".

Grid arrangement		Single Sourcing	Simulate	Save	Notes On	Date from 06.10.05	Date to 12.10.05	Planned Receipts Proposal		
Key figure	Initial	06.10.2005	07.10.2005	08.10.2005	09.10.2005	10.10.2005	11.10.2005	12.10.2005	13.10.2005	14.10.2005
Demand		809	809	809	809	3.000	3.000	4.500		
Planned Receipts										
In transit										
Projected stock	3.237	2.428	1.619	809	-3.000	-6.000	-10.500	-10.500		
Minimum proposal				357	1.167	4.167	7.167	11.667	11.667	
Maximum proposal	13.513	14.322	15.132	15.941	16.750	19.750	22.750	27.250	27.250	
Days of Supply	4,0	3,0	2,0	1,0						
Minimum Stock	1.167	1.167	1.167	1.167	1.167	1.167	1.167	1.167	1.167	
Maximum Stock	16.750	16.750	16.750	16.750	16.750	16.750	16.750	16.750	16.750	

And click to "Planned Receipts Proposal".

Grid arrangement		Single Sourcing	Simulate	Save	Notes On	Date from 06.10.2005	Date to 12.10.2005	Planned Receipts Proposal		
Key figure	Initial	06.10.2005	07.10.2005	08.10.2005	09.10.2005	10.10.2005	11.10.2005	12.10.2005	13.10.2005	14.10.2005
Demand		809	809	809	809	3.000	3.000	4.500		
Planned Receipts		14.250,00€								
In transit										
Projected stock	3.237	16.678	15.869	15.059	14.250	11.250	8.250	3.750	3.750	
Minimum proposal										
Maximum proposal	13.513	14.322	882	1.691	2.500	5.500	8.500	13.000	13.000	
Days of Supply	4,0	18,2	17,2	16,2	15,2	14,2	13,2	12,2	11,2	
Minimum Stock	1.167	1.167	1.167	1.167	1.167	1.167	1.167	1.167	1.167	
Maximum Stock	16.750	16.750	16.750	16.750	16.750	16.750	16.750	16.750	16.750	

The proposed values are changeable.

If the planning is finalized, data are to be saved.

Planned Receipts will

- be considered when operating Alerts
- not be transferred to customer
- be displayed in the due list
- be used as basis for ASNs

1.2 Additional functions in Inventory Details

Maintain Location Product:	No operation in KOSTAL proceeding
Time Bucket Profile	See next chapter
Inventory Audit Trail	No operation in KOSTAL proceeding
Inventory Monitor Setting:	No operation in KOSTAL proceeding
Purchase Order	No operation in KOSTAL proceeding
ASN Overview:	Selection and listing of all deliveries to product

- Due list: Selection and listing of all [due dates](#) resp. all deliveries to product
- Audit-Trail: ???
- Snap Shot: ???
- Download: Export of time series table in a CSV file without general product data

1.3 Configuration Time Bucket Profile

Pro product it can be arranged

- a) in which period of time/Horizon demands etc. are to be shown
- b) in which periods data should are to be summarized

The configuration of Time Bucket Profile you will find:

The screenshot shows the SAP interface for 'Inventory details (Supplier view) - Product View'. The left sidebar contains a navigation menu with 'Time Bucket Profiles' highlighted. The main area shows 'Inventory information' with the 'Time Buckets Profile' tab selected. Below this, a table displays key figures for different dates.

Key figure	Initial	06.10.2005	07.10.2005	08.10.2005	09.10.2005	10.10.2005	11.10.2005
Demand		809	809	809	809	3.000	3.000
Planned Receipts		14.250,0					
In transit							
Projected stock	3.237	16.678	15.869	15.059	14.250	11.250	8.250
Minimum proposal							
Maximum proposal	13.513	14.322	882	1.691	2.500	5.500	8.500
Days of Supply	4,0	18,2	17,2	16,2	15,2	14,2	11,2

Select the default setting for a Sip-To Location/Product combination:

Selection

Show

Ship-To Location Product

My Ship-To Location No. My Product No.

Horizon *

No. of years in months

No. of Months in weeks

No. of weeks in days

Start offset in days

If necessary, click to "Edit", in order to activate fields for data entry and select the scope for the new settings.

- Save for this location product only
- Save for my product in all my locations
- Save for my location for all my products
- Save for all my location products**

Horizon *

No. of years in months

No. of Months in weeks

No. of weeks in days

Start offset in days

Example:

Selection 1

Ship-To Location Product

My Ship-To Location No. My Product No.

Horizon *

No. of years in months

No. of Months in weeks

No. of weeks in days

Start offset in days

Key figure	Initial	06.10.2005	07.10.2005	08.10.2005	09.10.2005	VW:41.2005
Demand		809	809	809	809	10.500
Planned Receipts						
In transit						
Projected stock	3.237	2.428	1.619	809		-10.500
Minimum proposal				357	1.167	11.667
Maximum proposal	13.513	14.322	15.132	15.941	16.750	27.250
Days of Supply	4,0	3,0	2,0	1,0		
Minimum Stock	1.167	1.167	1.167	1.167	1.167	1.167
Maximum Stock	16.750	16.750	16.750	16.750	16.750	16.750

Selection 2

Ship-To Location: Product:
 My Ship-To Location No.: My Product No.:
 Save for this location product only

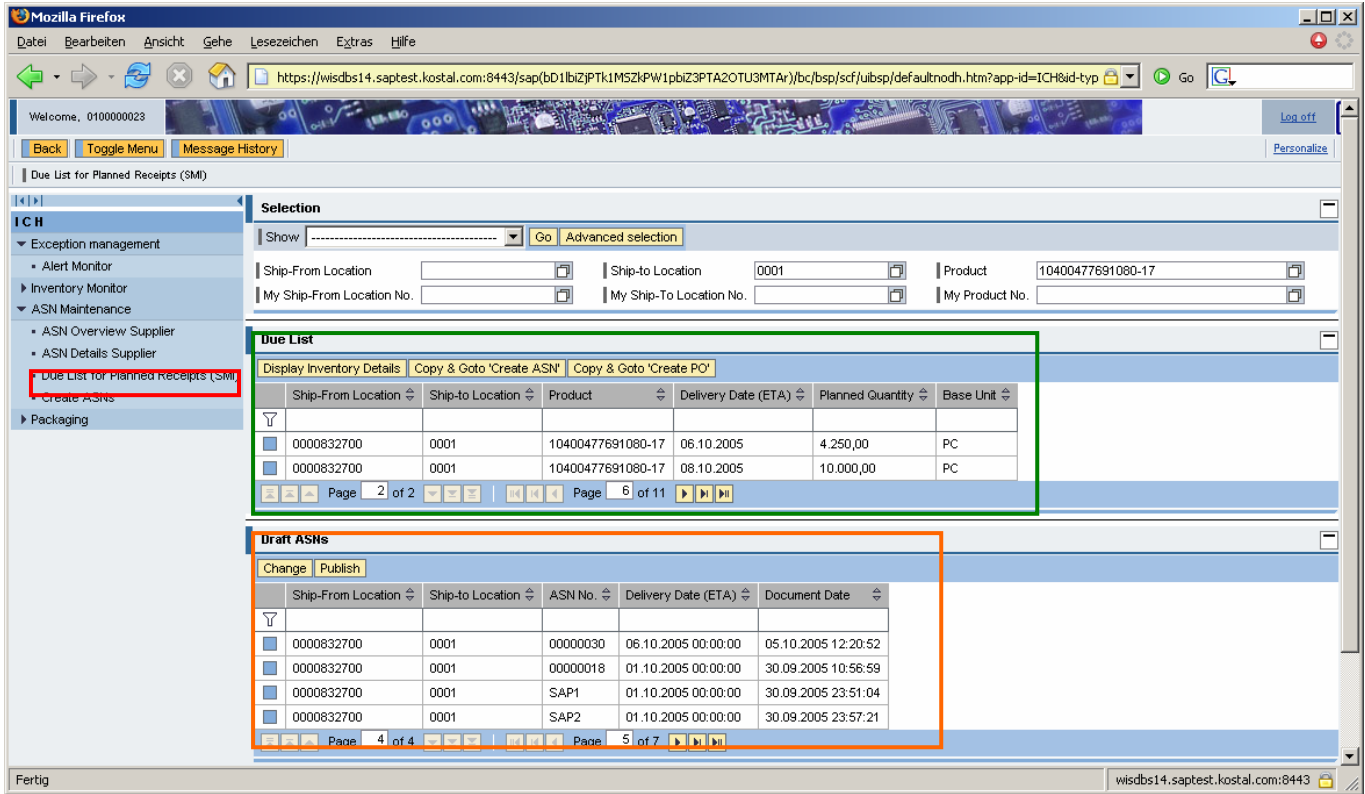
Horizon *
 No. of years: in months
 No. of Months: in weeks
 No. of weeks: in days
 Start offset: in days

Key figure	Initial	06.10.2005	07.10.2005	08.10.2005	09.10.2005	10.10.2005	11.10.2005	12.10.2005
Demand		809	809	809	809	3.000	3.000	4
Planned Receipts								
In transit								
Projected stock	3.237	2.428	1.619	809		-3.000	-6.000	-10
Minimum proposal				357	1.167	4.167	7.167	11
Maximum proposal	13.513	14.322	15.132	15.941	16.750	19.750	22.750	27
Days of Supply	4,0	3,0	2,0	1,0				
Minimum Stock	1.167	1.167	1.167	1.167	1.167	1.167	1.167	1
Maximum Stock	16.750	16.750	16.750	16.750	16.750	16.750	16.750	16

	05	VW:47.2005	VW:48.2005	VW:49.2005	VW:50.2005	VW:51.2005	VW:52.2005	JAN2006
00					19.500			21.000
00								
00								
07								
00								
00								
07								
00								

1.4 Due list and ASN

If deliveries are planned and saved in the demand details, so they will be sorted by delivery date (receipt at customer) and listed: see green framed table.



The orange framed table shows all ASN being in process with status "Draft".

As soon as a delivery is completed and the ASN has been published the corresponding due dates will be deleted.

In order to create a new delivery a new entry has to be marked within the due list (framed green). By clicking on you **Copy & Goto 'Create ASN'** you will refer to Create ASN.

Further processing of ASN has to be done similar to the release process.

1.5 Inventory-Alerts

Alert Description	ID	Description
<i>Below min. – projected stock</i>	11	The projected stock falls below the minimum stock.
<i>Above max. – projected stock</i>	12	The projected stock exceeds the maximum stock.
<i>Stockout – projected stock</i>	13	The projected stock is zero or below zero.
<i>Below min. – warehouse stock</i>	7041	The actual warehouse stock is below the minimum stock.
<i>Above max. – warehouse stock</i>	7042	The actual warehouse stock is above the maximum stock.
<i>Stockout – warehouse stock</i>	7043	The actual warehouse stock is zero.